



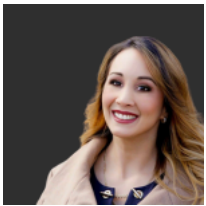
\$235,000

3412 PARK ROW DR, LOUISVILLE, KY 40216

<http://zhomesre.com>

Discover this spacious 4-bedroom, 1.5-bath gem, boasting a fully remodeled kitchen with elegant new cabinets, granite countertops, and sleek stainless steel appliances. The home features a great backyard, an unfinished basement for your creative touch, and a 4-car tandem garage. Perfectly situated near shops and highways for ultimate convenience.

- 4 beds
- 2 baths
- Single Family Residence
- Active Under Contract
- 1607 sq ft



Miriam C Castano Reyes

ZHomes Real Estate



Basics

Type: Single Family Residence

Bedrooms: 4 beds

Area: 1607 sq ft

Year built: 1954

Subdivision Name: HEATHERFIELDS

Status: Active Under Contract

Bathrooms: 2 baths

Lot size: 9147.6 sq ft

County Or Parish: Jefferson

Bathrooms Full: 1

Rooms

Rooms Total: 10

Building Details

Foundation Details: Poured Concrete

Electric: Residential

Roof: Shingle

Garage Spaces: 4

Stories: 2

Fencing: Partial

Construction Materials: Brk/Ven

Basement: Unfinished

Amenities & Features

Cooling: Central Air

Exterior Features: Porch

Parking Features: Detached, See Remarks, Driveway

Fireplaces Total: 1

Utilities: Electricity Connected, Fuel:Natural, Public Sewer, Public Water

Heating: Forced Air, Natural Gas

School Information



High School District: Jefferson

Miscellaneous

List Office Name: ZHomes Real Estate

